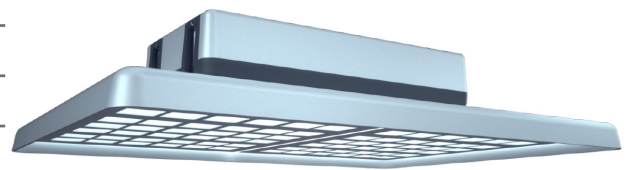


## NL-MBL-490x360-200W-xx-z

### PRODUCT SPECIFICATIONS

Product code	NL-MBL-490x360-200W-xx-z
Voltage	130 V - 305 V
LED driver	MeanWell XLG-200-H-A
System power	200 W
Frequency	50–60 Hz
Power factor (PF)	> 0,95
LED type	Alder AS-3030WNA2-C2C150-0201-YC8-C
Number of LEDs	336 pcs
Beam angle	110°, 80°, 30°/90°
PCB material	aluminum 2mm
Dimensions	487 mm x 362 mm x 120 mm
Weight	5,3 kg
Protection	IP65
Operating temperature (tc)	-20° C – +68° C
Ambient temperature (ta)	-20° C – +45° C
Lifetime (L70)	min. 70 000 h
Color rendering index	Ra>80
Housing color	light grey



MADE IN EU

IP65

IK10

DALI

1-10V

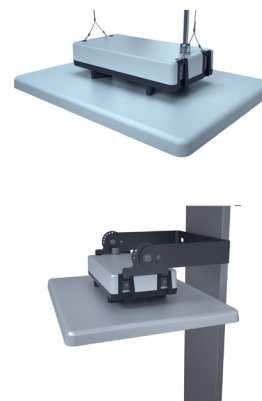
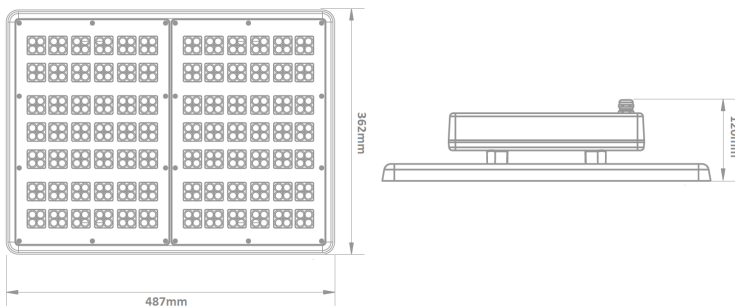
UGR

110°

80°

30° / 90°

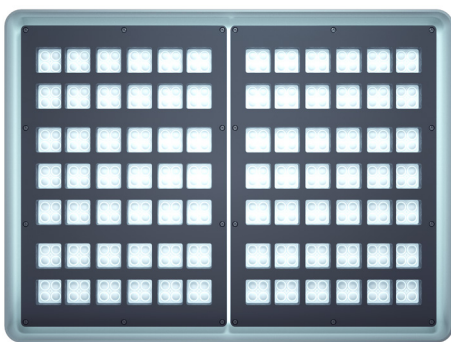
AL



The aluminum body ensures optimum heat dissipation. The light fixture can be mounted with a bracket directly to the ceiling or as a pendant luminaire.

### COLOR TEMPERATURE AND LUMINOUS FLUX

order no.	product code	diffuser / angle	CCT	color temperature	luminous flux
54325-65	NL-MBL-490x360-200W-WC-110	optics / 110°	6 500 K	cold white	28 460 lm
54325-50	NL-MBL-490x360-200W-WD-110	optics / 110°	4 000 K	normal white	28 460 lm
54325-40	NL-MBL-490x360-200W-WN-110	optics / 110°	4 000 K	normal white	28 460 lm
54326-65	NL-MBL-490x360-200W-WC-80	optics / 80°	6 500 K	cold white	27 040 lm
54326-50	NL-MBL-490x360-200W-WD-80	optics / 80°	5 000 K	daylight white	27 040 lm
54326-40	NL-MBL-490x360-200W-WN-80	optics / 80°	4 000 K	normal white	27 040 lm
54327-65	NL-MBL-490x360-200W-WC-3090	optics / 30°/90°	6 500 K	cold white	28 460 lm
54327-50	NL-MBL-490x360-200W-WD-3090	optics / 30°/90°	5 000 K	daylight white	28 460 lm
54327-40	NL-MBL-490x360-200W-WN-3090	optics / 30°/90°	4 000 K	normal white	28 460 lm



### PRODUCT FEATURES

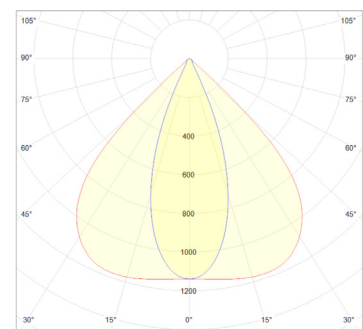
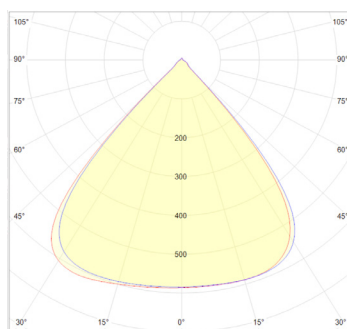
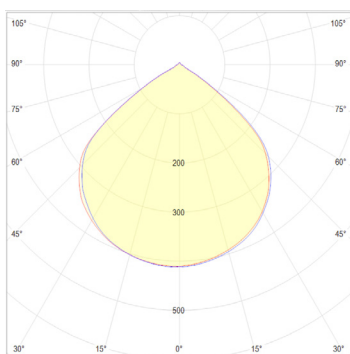
The MBL 100W luminaire, manufactured with the latest Alder LED technology, is intended for lighting in production and warehouse halls, workshops, shopping centers, sports halls and other areas.

The optics are specially developed to minimize glare and maximize homogeneity. Thanks to the anti-reflective foil on the lenses and a shield, the UGR is very low.

The pure aluminum construction with a thermal conductivity of 226 W / m · K ensures perfect heat dissipation and at the same time forms a supporting structure with high strength.

With a very high mechanical resistance IK10 and a degree of protection IP65, the luminaire can be used even in demanding environments.

The luminaire is also available as a DALI or 1-10V version, which offers various dimming and control options.



*With several possible beam angles, the luminaire is ideal for installation in different heights and situations.*